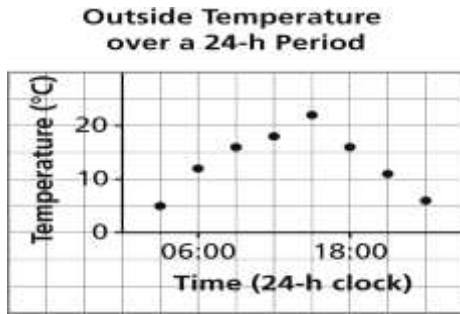


FPC 10

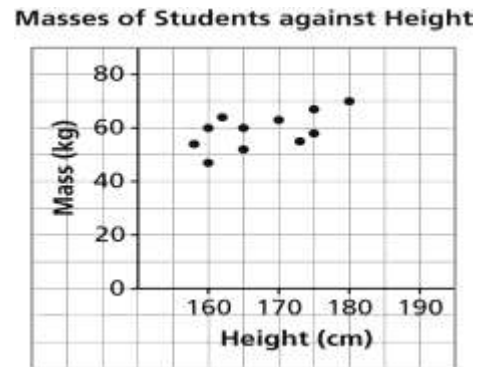
4.4 – Graphs of Functions & Domain and Range

1. Which of these graphs represents a function? Justify your answer.

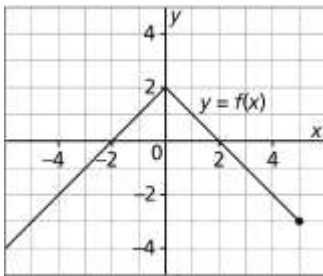
a)



b)



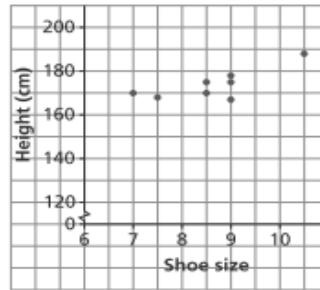
2. Determine if each of the following are functions or not, and find domain and range.



Function?

Domain:

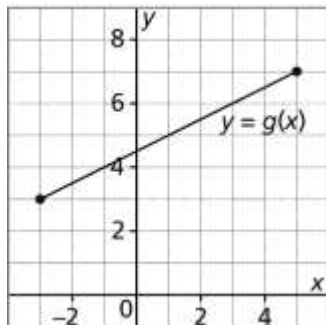
Range:



Function?

Domain:

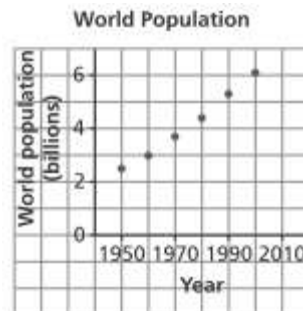
Range:



Function?

Domain:

Range:



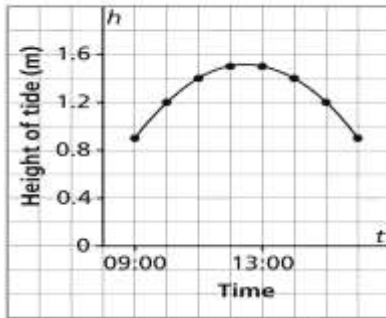
Function?

Domain:

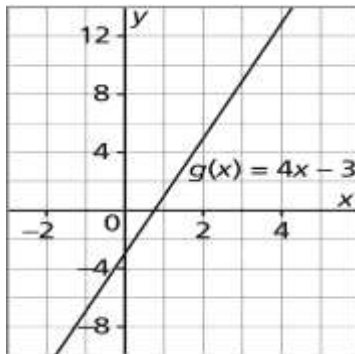
Range:

3. This graph shows the approximate height of the tide, h metres, as a function of time, t , at Port Clements, Haida Gwaii on June 17, 2009.

Height of Tide at Port Clements,
June 17, 2009



- a) Identify the dependent variable and the independent variable. Justify your choices.
- b) Why are the points on the graph connected? Explain.
- c) Is this relation a Function? Determine the domain and range of the graph.
4. Here is a graph of the function $g(x) = 4x - 3$.



- a) Determine the range value when the domain value is 3 or _____
- b) Determine the domain value when the range value is -7 or _____