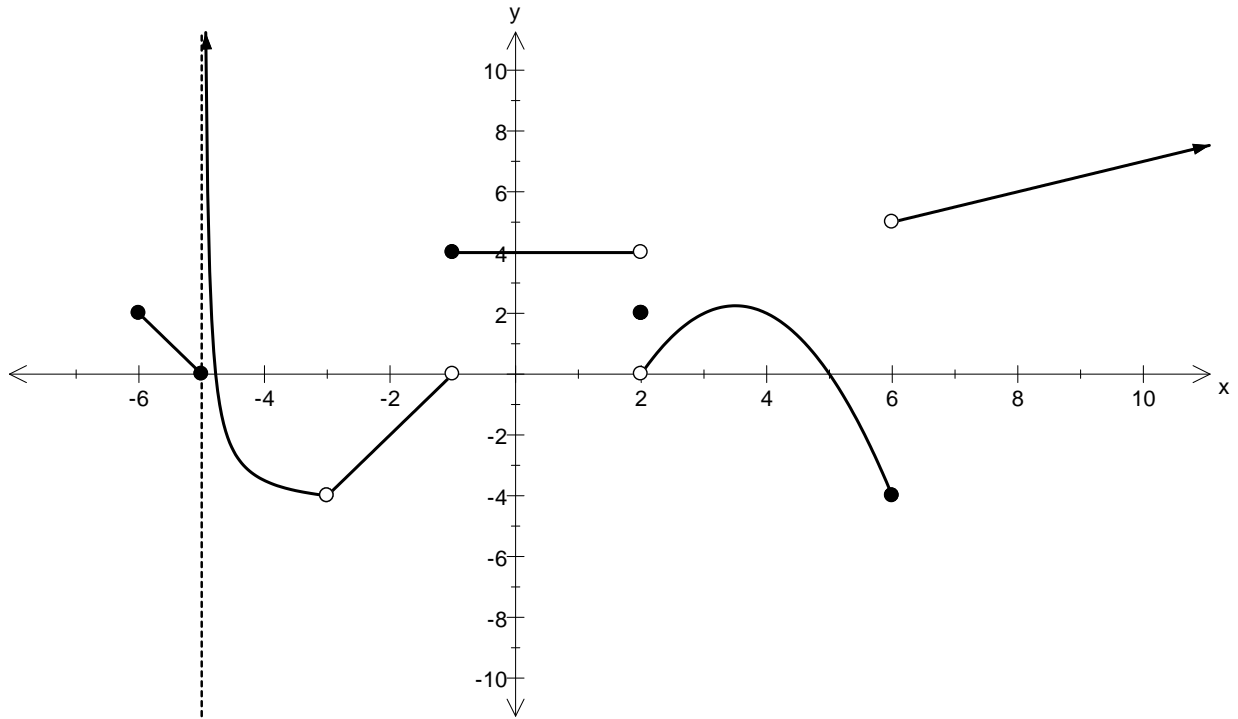


AP Calculus
Unit 1 - Limits
Intervals of Continuity



State the intervals of continuity for the function given above.

At the following values of x , state whether the function is *continuous from the left*, *continuous from the right*, *continuous from both left and right*, or *neither*.

$x = -6$:

$x = 2$:

$x = -5$:

$x = 5$:

$x = -3$:

$x = 6$:

$x = -1$:

$x = 8$:

$x = 0$: